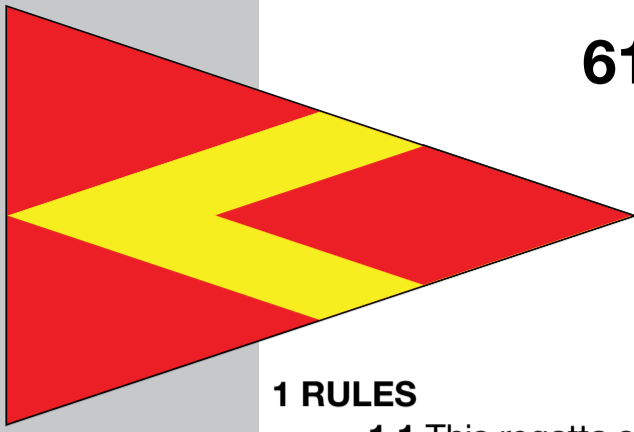


LaSalle Mariners Yacht Club  
**61st Annual Fighting Island Regatta**  
August 24, 2024

## Sailing Instructions



SAILING INSTRUCTIONS

### 1 RULES

- 1.1** This regatta shall be governed by the Racing Rules of Sailing 2021-2024 except where modified by the Notice of Race and Sailing Instructions. The prescriptions of Sail Canada will apply. These can be found at [sailing.ca](http://sailing.ca)
- 1.2** The Essex County PHRF Class Rules Apply.
- 1.3** PHRF boats unable to meet the Essex County PHRF Class Rules minimum crew requirement, must race in the PHRF Short Handed Division.
- 1.4** The Equipment Rules of Sailing shall apply. [www.sailing.org](http://www.sailing.org)
- 1.5** The Canadian Shipping act - SmallVessel Regulation ( required safety equipment) shall apply [laws-lois.justice.gc.ca/eng/regulations/SOR-2010-91](http://laws-lois.justice.gc.ca/eng/regulations/SOR-2010-91)
- 1.6** Due to the nature of sailing through the freighter shipping channels, propulsion using an engine or any other method is permitted, in the shipping channel ONLY and in an emergency collision situation, providing the boat does not gain significant advantage in the race. See RRS 42.3 exceptions.

### 1(a) PHRF SHORT HANDED RULES

- 1a.1** Section 1 “Race Rules” shall apply with the exception noted in **1a.2**
- 1a.2** Boats shall race with a maximum of 2 persons onboard.
- 1a.3** The use of self steering device is permitted.

### 2 NOTICES TO COMPETITORS

- 2.1** Notices to competitors will be posted on the official notice board located inside the LMYC Clubhouse. Notices will also be posted on [noticeofrace.net](http://noticeofrace.net)

### 3 CHANGES TO SAILING INSTRUCTIONS

- 3.1** Any changes to sailing instructions will be posted before 1100 on the day of the day of the event.

### 4 SCHEDULE OF RACES

- 4.1** All races in the 60th Annual Fighting Island Regatta will take place August 24, 2024
- 4.2** The scheduled time of the warning signal is 1155AM.
- 4.4** Class splits will be posted by 20:00hrs on Friday August 23, 2024 at LMYC on the official notice board. Class splits will also be posted online at [noticeofrace.net](http://noticeofrace.net) . Please check to verify your splits.

### 5 CLASS FLAGS

- 5.1** The class flags and start sequence will be:

Class	Flag Colour	Scheduled Start Sequence
PHRF A	YELLOW	1200
PHRF B	GREEN	1205
PHRF C	ORANGE	1210
JOG/JAM	WHITE	1215
PHRF SHORT HANDED	PINK	1220

### 6 RACING AREAS

- 6.1** Attachments A1, A2, A3, show the maps and location of the courses in and around Fighting Island.

## 7 COURSES AND MARKS

### COURSE 1 (9.45 NM) - See attachment A1

From the Start area head downstream using the Fighting Island Channel. Leave **Fighting Island North Light to PORT**. Continue downstream then **Leave the 1st Red Spar in Ballard's Reef Channel DF84 to PORT**. Continue downstream then **Round Green Spar DF1 to PORT**. Head upstream leaving **Turkey Island to STARBOARD** and **Bifurcation Buoy DGB to PORT** to the finish line located between the Race Committee boat and the Orange mark near LMYC and off the South tip of Grassy Island.

### COURSE 2 (8.71 NM) - See attachment A2

From the start, head downstream using the Fighting Island Channel. **Leave Fighting Island North Light to PORT**. Continue downstream then leave the 1st **RED SPAR** in Ballard's Reef Channel **DF84 to PORT**. Continue downstream then **Round RED BUOY D78 to PORT**. Head upstream leaving **GREEN SPAR DF1 to PORT** and Finish between the Race Committee Boat and **GREEN SPAR DF3**.

### COURSE 3 (11.55 NM) - See attachment A3

From the start, head downstream using the Fighting Island Channel. Leave the **Fighting Island North Light to PORT**. Continue downstream then leave the 1st **RED SPAR** in Ballard's Reef Channel **DF84 to PORT**. Continue downstream then **round RED BUOY DF78** leaving it to **PORT**. Head upstream leaving **GREEN SPAR DF1 to PORT**, then leave **Turkey Island to STARBOARD**, and **BIFURCATION BUOY DGB to PORT** and finish between the Race Committee boat and the Orange mark near LMYC and off the South Tip of Grassy Island.

### SHORT COURSE (6.67 NM) - See attachment A1- Course Board will be #4

If the Race Committee deems this course necessary, The course followed is **COURSE 1**, shortened to finish between the **orange mark** in the area of **GREEN SPAR DF3** due North in the upstream leg and the Race Committee boat to the east of the orange. mark. Code Flag "S" will be flown and and if possible an announcement will be made on VHF Channel 68.

## 8 THE START

- 8.1 Races will be started by using RRS 26.
- 8.2 The starting area will be approximately 1/2 mile NE of the northern tip of Fighting Island on the Canadian side of the shipping channel between an orange start mark and the orange flag on the Race Committee boat.
- 8.3 Boats whose warning signal has not been made shall avoid the starting area during the starting sequence for other races.
- 8.4 The Race Committee will issue 5 blasts of a horn 1 minute prior to the warning signal for the first class start unless the race has been postponed. If the race has been postponed, the warning signal will be made 1 minute after the removal of the "AP" flag with one horn blast.

## 9 THE FINISH

- 9.1 The finish line shall be between the Orange mark displaying the Orange Flag and the Race Committee boat displaying the "BLUE" flag or the "S" flag on a staff.

## 10 TIME LIMIT

- 10.1 There shall be no time limit for this event.

## 11 PROTESTS AND REQUESTS FOR REDRESS

- 10.1 Protest forms will be available in the LMYC clubhouse.
- 10.2 The protest time limit is 60 minutes after the last boat has finished.
- 10.3 Notices will be posted no later than 30 minutes after the protest time to inform competitors of hearings in which they are parties or names as witnesses. Hearings will be held in a private area on LMYC club grounds.

## 12 SCORING

**12.1** The low points system of Appendix A shall apply.

## 13 SAFETY REGULATIONS

**13.1** A boat that retires from the race shall notify the race committee as soon as possible on VHF 68.

**13.2** A boat that starts their engine due to a dangerous situation in the channel with commercial traffic shall notify the Race Committee via VHF 68 when they start their engine and when they turn their engine off.

## 14 RADIO COMMUNICATION

**14.1** Except in an emergency, a boat that is racing shall not make voice or data transmissions and shall not receive voice or data communication that is not available to all boats.

**14.2** On the water, the race committee may make courtesy broadcasts to competitors on VHF radio channel 68.

## 15 PRIZES

**Prizes will be given as follows:**

**15.1** The 1st, 2nd, and 3rd positions within each division will be awarded flags. If there are fewer than 5 boats in a division, all 3 flags may not be awarded.

**15.2** The Commodore Alan Moore Trophy will be awarded to the boat with the best overall corrected time.

**15.3** The Inter Island Perpetual Trophy will be presented to the boat with the fastest elapsed time.

**15.4** The 60th Annual Fighting Island Regatta is a counter towards the ECPHRF Lake Erie Boat of the Year.

## 16 DISCLAIMER OF LIABILITY

**16.1** Competitors participate in the regatta entirely at their own risk. See RRS3 - Decision to Race. The organizing authority will not accept any liability for material damage or personal injury or death sustained in conjunction with or prior to, during, or after the regatta.

## 17 PHOTO AND VIDEO DISCLAIMER

**17.1** By participating in the event, competitors give absolute right and permission for any photograph and video footage taken of themselves and the boat they are sailing during the event to be published in any media whatsoever, for either editorial, advertising or to be used in press information without compensation.

## 18 INSURANCE

**18.1** Each participating boat shall be insured with valid third-party liability insurance. Proof of insurance shall be provided as part of the registration requirements.

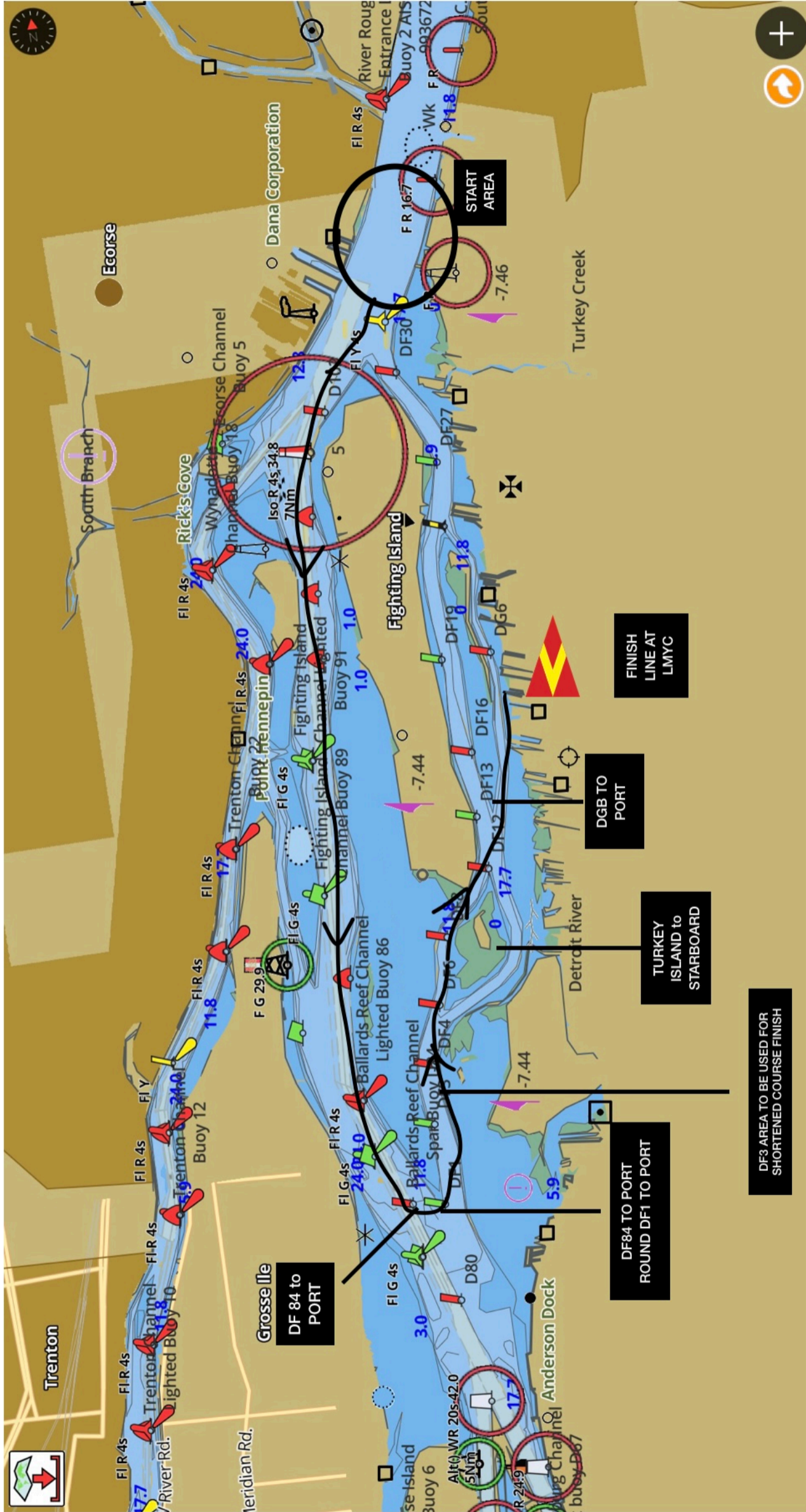
## 19 CUSTOMS

**19.1** Skippers are responsible for making sure they follow the proper customs procedures for their boat and crew. The organizers of this regatta and LMYC are not responsible if the procedures printed here change. You must call customs upon arrival at 1-888-226-7277. LMYC is a designated point of entry.

## 15 FURTHER INFORMATION

**15.1** For further information please contact:

Brenda Morgan ( Race Chair) at (226)350-0555 or [brendamariemorgan@yahoo.ca](mailto:brendamariemorgan@yahoo.ca) or [brendathesailor@gmail.com](mailto:brendathesailor@gmail.com) or [lmycracing@gmail.com](mailto:lmycracing@gmail.com)



**Course 1 and Shortened Course (9.45NM)**

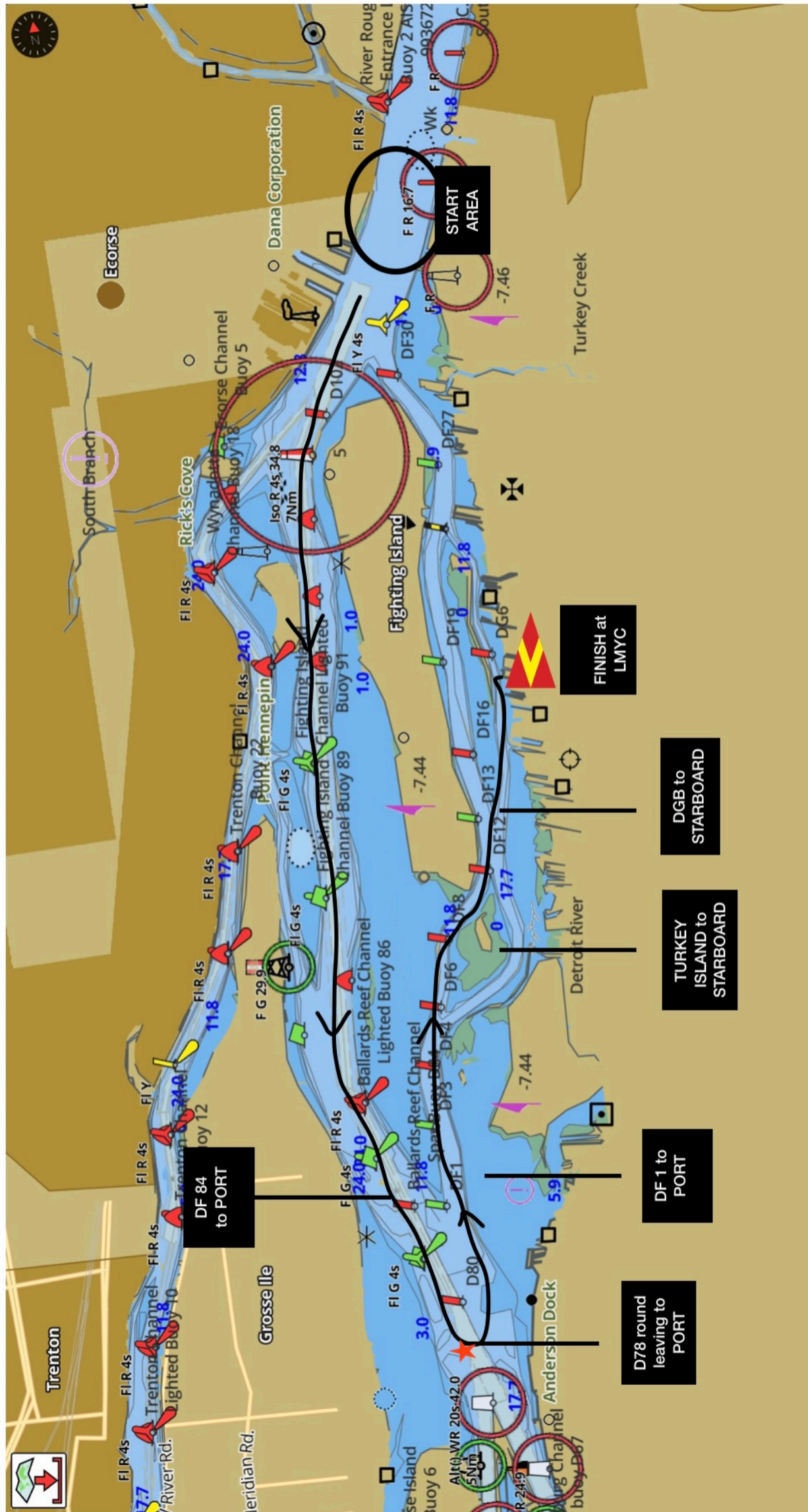
From the start head downstream using **Fighting Island North Light** to **PORT**. Continue downstream then leave the **1st RED SPAR** in Ballard's Reef Channel (**DF84**) to **PORT**. Continue downstream then round **DF1** to **PORT**. Head upstream leaving **Turkey Island** to **STARBOARD** and Bifurcation **DGB** to **PORT** to the finish line located between RC boat and orange mark near LMYC and off the south tip of Grassy Island. (9.45 NM) Lines on map are approximate.

\*\*\*\*\*For **Shortened Course**, **COURSE 1** will be sailed, shortened to finish between the orange mark in the area of **GREEN SPAR DF3** due North in the upstream leg and the RC boat to the East of the Orange Mark. \*\*\*\*\* (6.67NM)



**Course 2 (8.71NM)**

From the start, head downstream using the Fighting Island Channel. Leave the **Fighting Island North Light to PORT**. Continue downstream, then leave the **1st RED SPAR** in Ballard's Reef Channel **DF84 to PORT**. Continue downstream then round **RED BUOY D78 PORT**. Head upstream leaving **GREEN SPAR DF1 to PORT** and Finish between the Race Committee Boat and **GREEN SPAR DF3 (8.71NM)** - Black lines on courses are approximate.



**Course #3 (11.55NM)**

From the start, head downstream using the Fighting Island North Light to **PORT**. Continue downstream then leave the 1st **RED SPAR** in Ballard's Reef Channel **DF84** to **PORT**. Continue downstream then round **RED BUOY D78** leaving it to **PORT**. Head upstream leaving **GREEN SPAR DF1** to **PORT**, Then leave **Turkey Island** to **STARBOARD**, and Bifurcation Buoy **DGB** to **PORT** and Finish between RC boat and Orange mark near LMYC and off the south tip of Grassy Island. (11.55NM) Lines on Map are approximate.